



FAST FACTS

POWER PLANTS CAN SCALE TO MORE THAN 500MW


OPERATIONAL IN AS FAST AS 30 DAYS

LEADER IN FUEL FLEXIBILITY

MOBILE GAS TURBINES

DIESEL AND NATURAL GAS GENERATORS

COST EFFECTIVE AND FUEL EFFICIENT

STRATEGIC ALLIANCE WITH GE  Partner



APR Energy is a global leader in rapidly delivered, large-scale power solutions and the world's leading provider of fast-track mobile turbine power. The reliable power we provide helps foster economic growth, socio-political stability and an overall improved quality of life for the communities we serve.

# Large-Scale Power. Fast.

## Fast-Track Power

APR Energy delivers power fast – when and where it is needed. We combine highly mobile technology with proprietary modular plant design and advanced engineering, logistics and installation capabilities to deploy, install and commission a large-scale power plant within days or weeks, not years.

## Advanced, Mobile Technology

APR Energy offers the newest power generation fleet in the industry, including mobile gas turbine technology from GE, as well as diesel and natural gas reciprocating-engine power modules from Caterpillar. Our technology provides the latest advancements in fuel efficiency and emissions controls, as well as remote automation and monitoring capabilities, and automatic reactive power control for voltage support and grid stability.

## Customized, Flexible Solutions

APR Energy builds customized solutions to accommodate specific customer requirements respective to application, scale, generation technology preference, fuel type, voltage

APR ENERGY HAS INSTALLED **OVER 4.2GW** OF CAPACITY IN **MORE THAN 30 COUNTRIES** AROUND THE GLOBE



## FAST-TRACK INSTALLATION: PUNTA DEL TIGRE, URUGUAY 200MW



Visit [aprenergy.com](http://aprenergy.com) to watch the time-lapse video

We deliver...

### Bridging power

We provide utilities needed electricity while power facilities are being upgraded, built or replaced, helping to minimize interruption to a community's electricity supply.

### Grid stability

Our turbine technology and distributed power solutions help optimize and stabilize our customers' grids, providing reliable power and improving the efficiency of substations and electrical networks.

### Base load operation

The large-scale nature of our plants and reliability of our technology enable us to provide electricity on a continuous, 24/7 basis to meet customers' ongoing and critical power needs.

### Peaking power

The flexibility of our plants enables us to generate electricity on an 'as needed' basis during daily or seasonal peak demand, helping to alleviate blackouts, brownouts and load shedding.

### Distributed generation

Our mobile technology enables us to help customers with inadequate or inefficient transmission lines by placing generation closer to the point of consumption, improving electrical system efficiency and avoiding blackouts.

### Industrial generation

Our solutions provide power-intensive industries such as mining and oil & gas with reliable, dedicated electricity to support critical operations and avoid costly work outages.

### Supplemental power

The rapid power-up/power-down capability of our turbines and reciprocating engines makes them an ideal partner to supplement hydropower and intermittent renewables such as wind and solar.

range and configuration needed to fit a given site. Also, we offer flexible business terms to help serve our customers' unique financial and contractual needs.

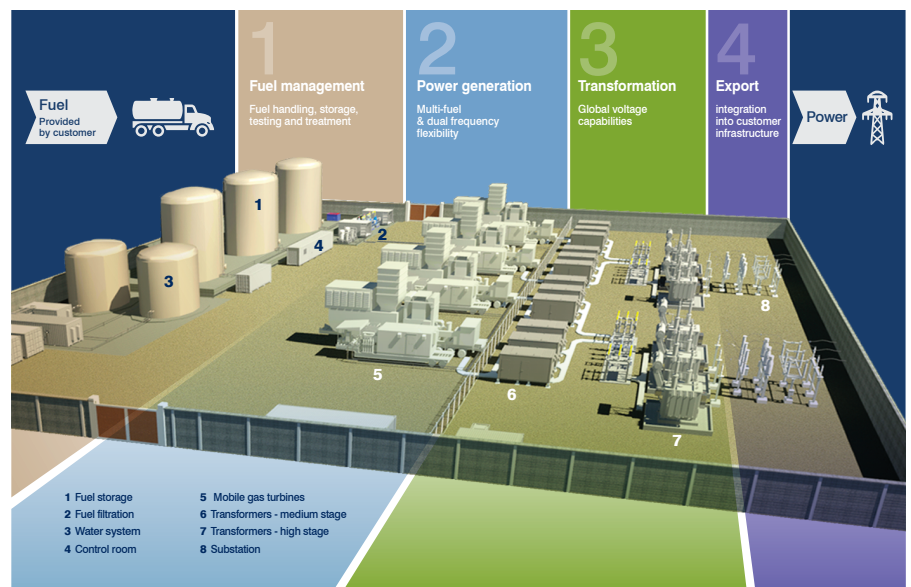
### Turnkey Design and Support

APREnergy installs, operates and maintains its own power plants and equipment, including site preparation and integration with surrounding infrastructure. Customers, therefore, do not worry about project management, plant operations or upfront funding or financing, typically paying only for electricity generation and capacity.

### Partnering with our Customers and Communities

We take great care in being a good steward of the health, safety and environment of the communities in which we operate. We also provide work opportunities and skills training to the local workforce, and through our Community Development Program, implement philanthropic initiatives at each plant location in support of health, education and infrastructure initiatives.

### Our Turnkey Power Plant Solution



+1 904 223 2278

e-mail: [info@aprenergy.com](mailto:info@aprenergy.com)

[www.aprenergy.com](http://www.aprenergy.com)

Twitter: [@aprenergyplc](https://twitter.com/aprenergyplc) | LinkedIn: [linkedin.com/company/apre-energy](https://www.linkedin.com/company/apre-energy) | Facebook: [facebook.com/aprenergy](https://www.facebook.com/aprenergy) | YouTube: [youtube.com/aprenergy](https://www.youtube.com/aprenergy)